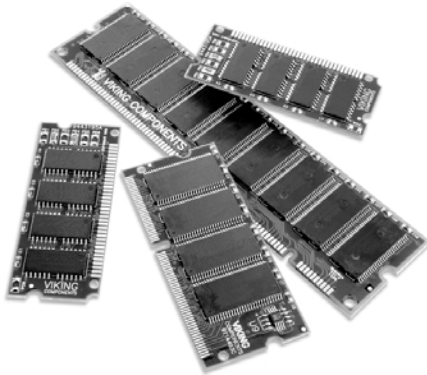


VIKING MEMORY

INSTALLATION GUIDE

COMPAQ®

Armada 1700C Series; Prosignia 120, 140, 160



Manual No. 1005239 • Release 04/99, Rev. B

SPEED • POWER • PERFORMANCE®

The **Compaq Armada 1700 Series** comes standard with 32MB of memory soldered. It can be expanded to a maximum of 160MB by installing the following Viking Components memory options into its one available expansion slot.

The **Compaq Prosignia 120, 140 and 160** come standard with 32MB soldered or 64MB(32MB soldered + 32MB module) of memory. They can be expanded to a maximum of 160MB* by installing the following Viking Components memory options into their one available expansion slot.

Description

32MB SDRAM Memory Module
64MB SDRAM Memory Module
128MB SDRAM Memory Module

Viking P/N

C14890, RC14890
C14891, RC14891
C14892, RC14892



Caution:

Electro Static Discharge (ESD) can damage electronic components. Before touching the memory module, ensure that you are discharged of static electricity by touching a grounded metal object.

INSTALLATION INSTRUCTIONS:

1. Turn the computer off and disconnect the AC power supply and any other cables from the unit.

Note: If the unit appears to be powered down, ensure that it is not in Suspend mode.

2. Turn the computer upside-down. Remove the battery from the system. If you are not familiar with this procedure, please refer to your computer's "Owner's Manual." Return the system right side up and open the display screen.



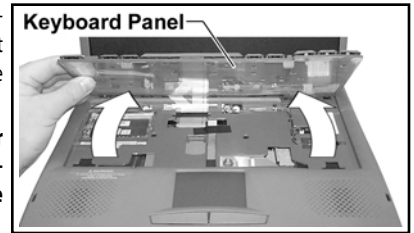
Locking Tabs

3. Locate the two locking tabs at the base of the keyboard panel. The first tab is below the "Alt" key and the second tab is located below the "Ctrl" key.

4. With a small screwdriver or a paper clip, gently press both locking tabs down to release the keyboard panel.

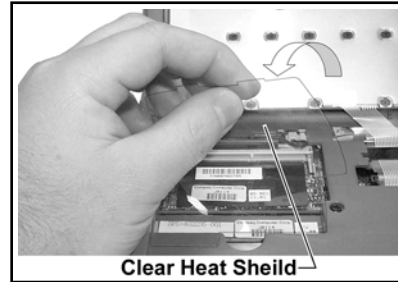


5. Grasp the front edge of the keyboard panel and gently rotate it upside down so that it rests on the display screen.



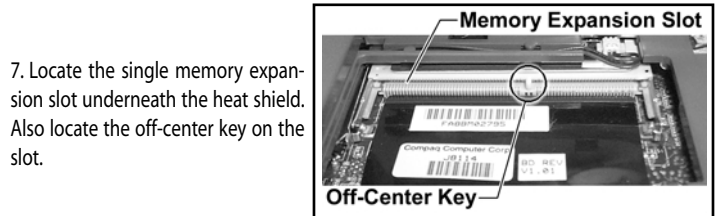
Keyboard Panel

Warning: Do not disconnect or place tension on the cables connecting the keyboard panel to the system board.



Clear Heat Shield

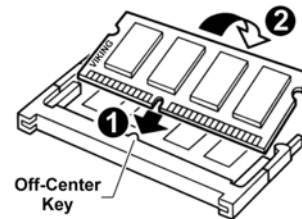
6. Locate the clear heat shield in the left side of the open compartment. Gently lift up the edge closest to the display screen and fold it toward you.



Memory Expansion Slot

Off-Center Key

7. Locate the single memory expansion slot underneath the heat shield. Also locate the off-center key on the slot.



Off-Center Key

8. To install a memory module, insert the module into an expansion slot at an angle and then push it down until it clicks into place. To be certain that the module is installed correctly, ensure that the off-center notch on the module is aligned with the off-center key of the expansion slot. The module can only be installed one way due to the position of the notch.

9. Replace the clear heat shield back to its original position.

10. Replace the keyboard panel back to its original position. Be sure that both of the locking tabs have secured the keyboard panel.

11. Insert the battery back into its compartment.

12. Replace the AC power supply and any other cables you may have disconnected.

13. Turn the system on. The computer will automatically reconfigure itself to recognize the additional memory. The new memory can be verified during the POST routine at start-up and at the SETUP utility.

The installation is now complete.

WARRANTY & DISCLAIMERS:

All Viking Components products have been thoroughly tested free of defects in material and workmanship. If any malfunction should occur while using one of our products in its recommended environment, Viking, at its option, will repair or replace the product at no charge, provided the product or any part thereof has not been abused, misused, neglected, replaced, repaired or modified. Viking shall make the final determination as to the existence and the cause of any defect. Viking will not repair or replace products designated as having a "Limited Lifetime" which fail solely because their estimated life has expired. No warranty is made with respect to customer products produced to original purchaser specifications except as specifically stated in writing by Viking.

All shipping costs shall be the responsibility of the purchaser.

Except as provided herein, there are no express or implied warranties of merchantability or fitness for a particular purpose. Under no circumstances will Viking Components be liable in any way to the purchaser for any damages, including but not limited to lost revenue, lost wages, or any other incidental or consequential damages arising out of the use of or inability to use this product. Viking reserves the right to make modifications in both hardware and software without prior notifications.

All Viking Components are 100% guaranteed compatible with the OEM machines for which they are designed. All OEM's names, trademarks and part numbers are used for identification purposes only, and in no way imply that any of our products are original equipment parts.

Compaq, Armada, Presario and Prosignia are registered trademarks of Compaq Computer Corporation.

Product names mentioned herein may be trademarks or registered trademarks of their respective companies.