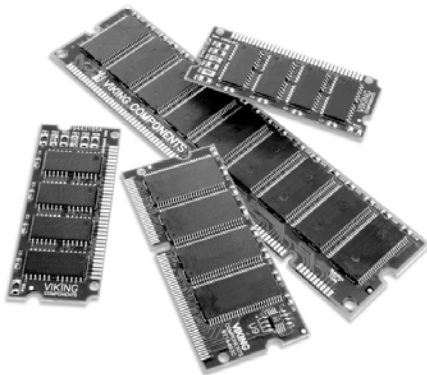


VIKING MEMORY

INSTALLATION GUIDE

COMPAQ®

Armada 1500, SB Series



Manual No. 1005168 • Release 03/99, Rev. E

SPEED • POWER • PERFORMANCE®

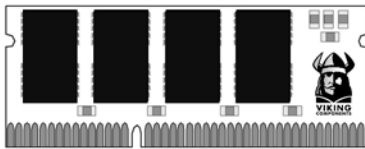
The Compaq Armada 1500 and SB Series come standard with 16MB or 32MB of memory soldered. They can be expanded to a maximum of 80MB or 96MB by installing the following Viking Components memory options into their one available expansion slot.

Description

16MB Memory Module
32MB Memory Module
64MB Memory Module

Viking P/N

C72109, RC72109
C20580, RC20580
C20685, RC20685



Caution:

Electro Static Discharge (ESD) can damage electronic components. Before touching the memory module, ensure that you are discharged of static electricity by touching a grounded metal object.

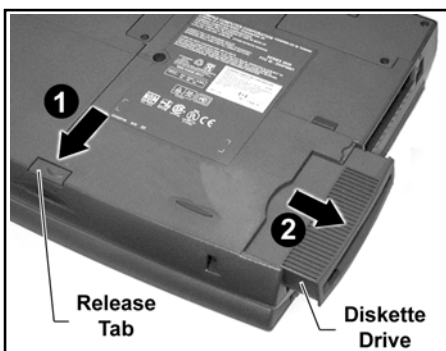
INSTALLATION INSTRUCTIONS:

1. Turn the computer off and disconnect the AC power supply and any other cables from the unit.

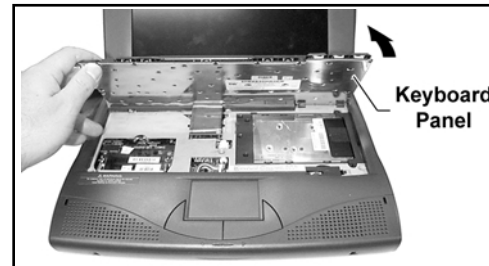
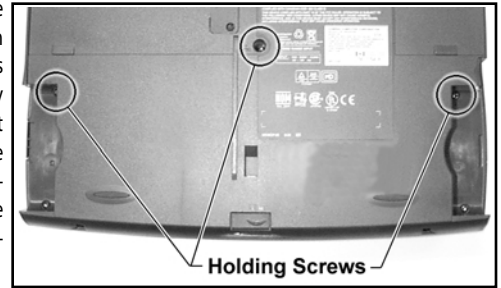
Note: If the unit appears to be powered down, ensure that it is not in Suspend mode.

2. Remove the battery from your system. If you unfamiliar with this procedure, please refer to your computer's "Owner's Manual."

3. Turn the computer upside-down and rotate it so that you are facing the front of the system. Locate the diskette drive on the right side panel. Also locate its release tab towards the front of the bottom panel. To remove the drive, first slide the tab towards the front of the computer and the pull the drive out of its compartment.



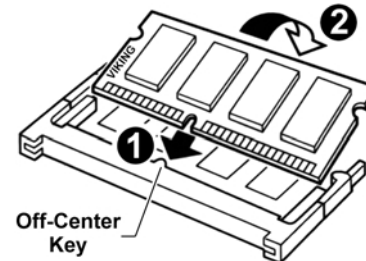
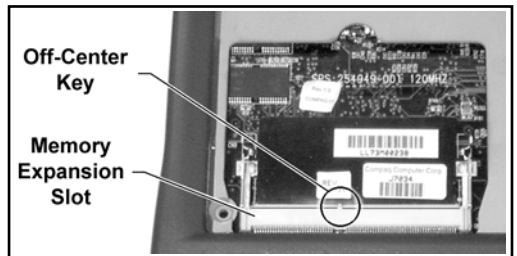
4. There are three holding screws on the bottom panel that will need to be removed. The first screw is located in the center of the bottom panel. The second one is located in the battery compartment. The last screw is located in the diskette drive compartment. Remove only these screws with a small flat-blade screwdriver.



5. Carefully turn the system right side up and open the display screen.

6. Lift the keyboard panel by its front edge and rest it against the display screen.

7. Locate the memory expansion slot in the left side of the open compartment. Notice the location of the off-center key on the expansion slot.



8. To install a memory module, insert the module into the expansion slot at an angle and then push it down until it clicks into place. To be certain that the module is installed correctly, ensure that the off-center notch on the module is aligned with the off-center key of the expansion slot. The module can only be installed one way due to the position of the notch.

9. Replace the keyboard panel to its original position. Close the display screen and turn the computer upside-down.

10. Replace and secure the three holding screws.

11. Return the diskette drive and the battery into their compartments.

12. Turn the computer right-side up. Replace the AC power supply and any other cables you may have disconnected.

13. Open the display screen and turn the system on. The computer will automatically reconfigure itself to recognize the newly added memory. The new memory can be verified during the POST routine at start-up and at the SETUP utility.

The installation is now complete.

WARRANTY & DISCLAIMERS:

All Viking Components products have been thoroughly tested free of defects in material and workmanship. If any malfunction should occur while using one of our products in its recommended environment, Viking, at its option, will repair or replace the product at no charge, provided the product or any part thereof has not been abused, misused, neglected, replaced, repaired or modified. Viking shall make the final determination as to the existence and the cause of any defect. Viking will not repair or replace products designated as having a "Limited Lifetime" which fail solely because their estimated life has expired. No warranty is made with respect to customer products produced to original purchaser specifications except as specifically stated in writing by Viking.

All shipping costs shall be the responsibility of the purchaser.

Except as provided herein, there are no express or implied warranties of merchantability or fitness for a particular purpose. Under no circumstances will Viking Components be liable in any way to the purchaser for any damages, including but not limited to lost revenue, lost wages, or any other incidental or consequential damages arising out of the use of or inability to use this product. Viking reserves the right to make modifications in both hardware and software without prior notifications.

All Viking Components are 100% guaranteed compatible with the OEM machines for which they are designed. All OEM's names, trademarks and part numbers are used for identification purposes only, and in no way imply that any of our products are original equipment parts.

Compaq and Armada are registered trademarks of Compaq Computer Corporation.

Product names mentioned herein may be trademarks and/or registered trademarks of their respective companies.